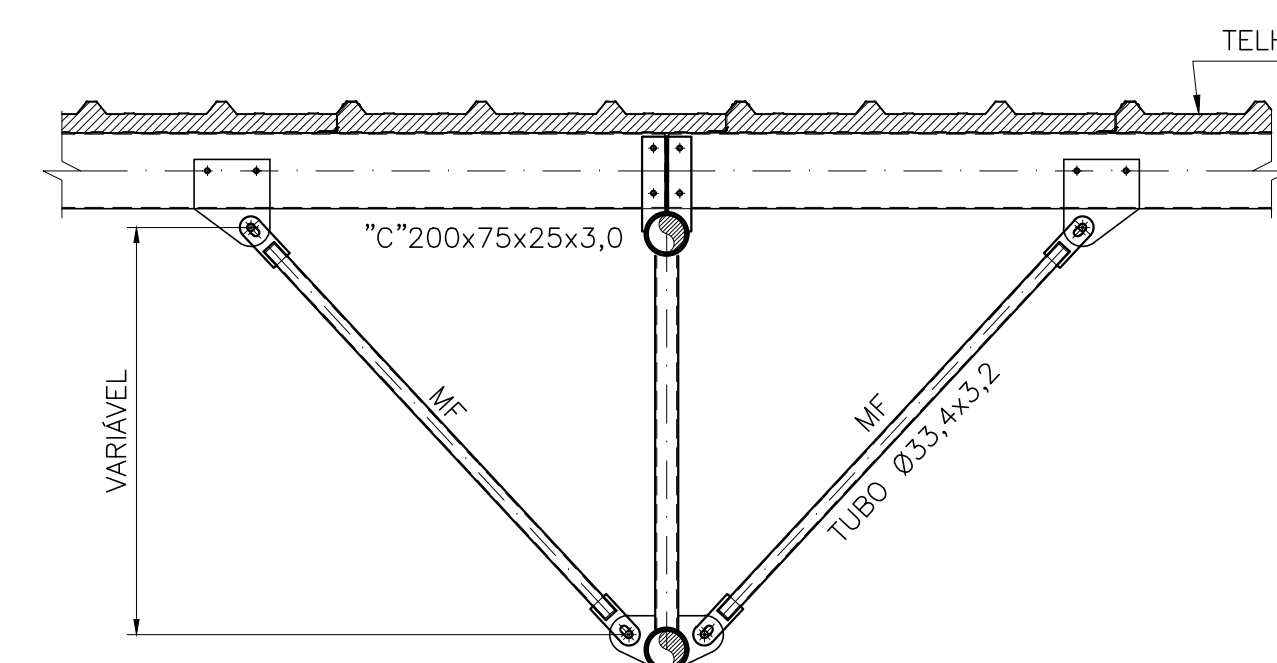
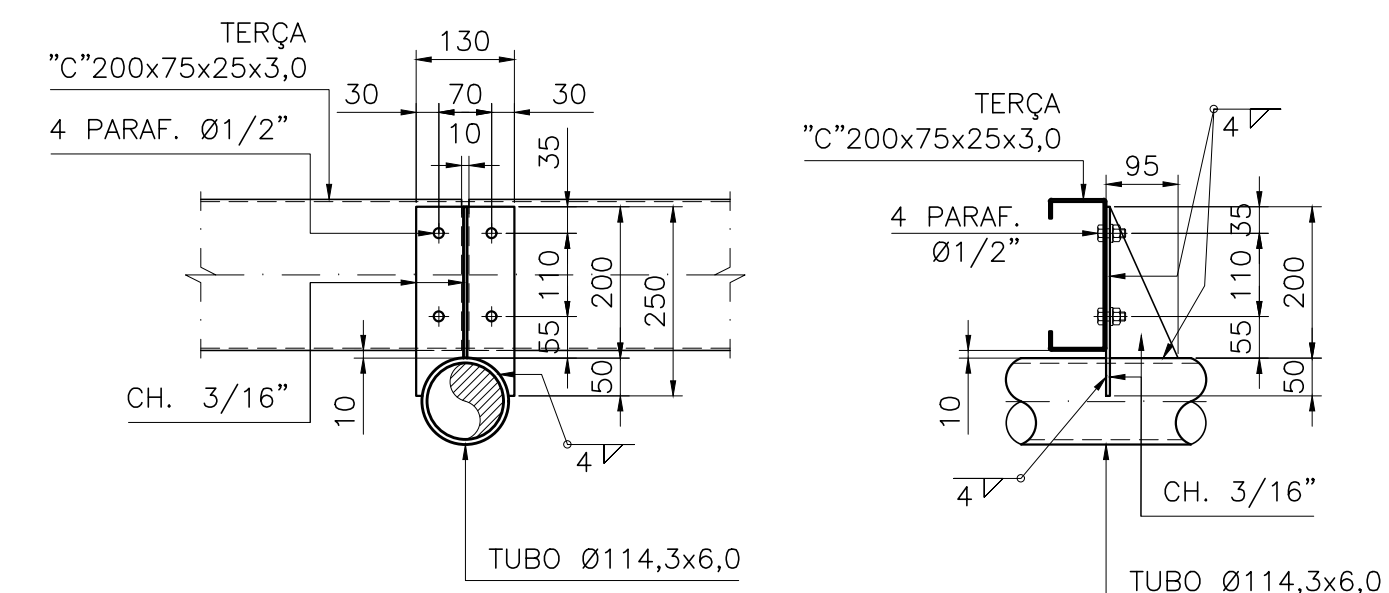


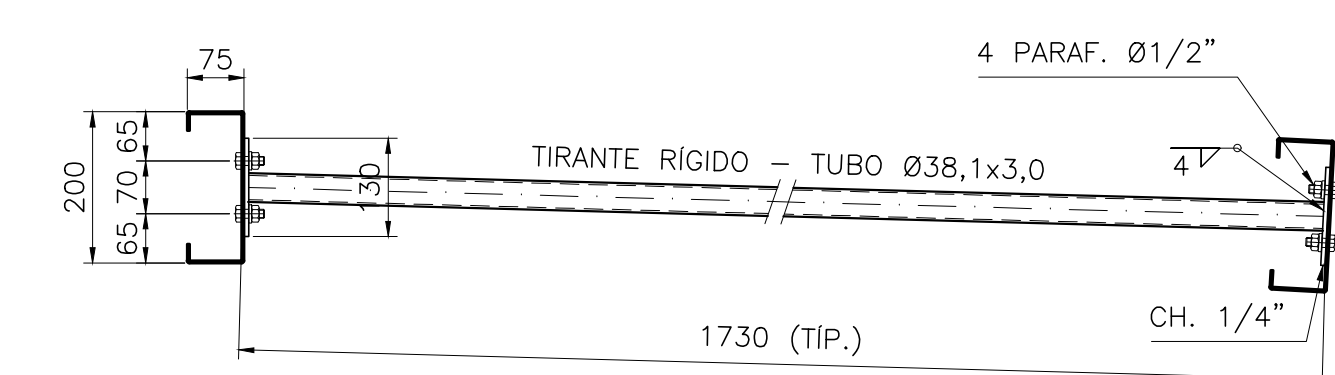
**LOCAÇÃO DAS BASES**  
ESC. 1:75



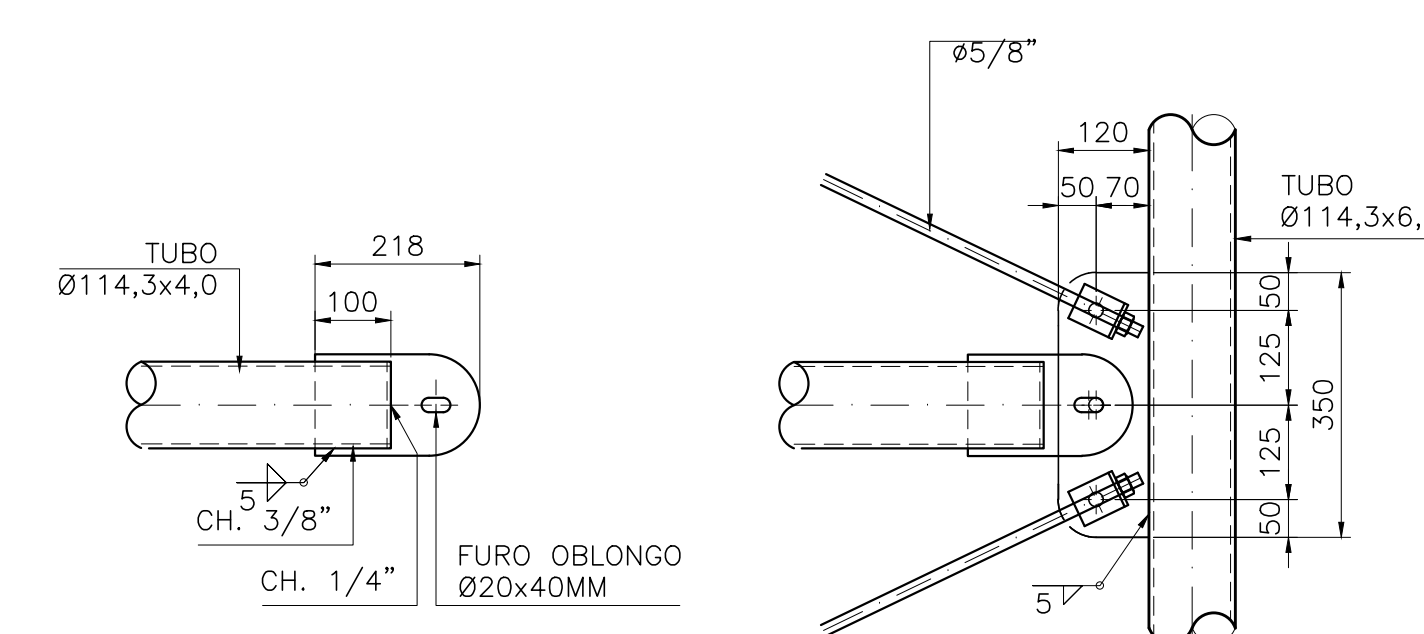
DETALHES DAS MÃOS FRANCESAS



DETALHE "1" - SUPORTE DAS TERÇAS



### DETALHE DOS TIRANTES RÍGIDOS



**DETALHE DO CONTRAVENTAMENTO**  
ESCALA: 1:10

LISTA DE MATERIAIS			
DESCRIÇÃO	COMPR. (m)		PESO(kg)
TUBO 200x100x3,0	292	3857	
"C"200x75x25x3,0	1195	10209	
TUBO Ø35,4x2,2	403	859	
TUBO Ø38,1x3,0	532	1383	
TUBO Ø60,3x3,9	914	4972	
TUBO Ø73,0x4,0	32	216	
TUBO Ø114,3x4,0	254	2743	
TUBO Ø114,3x6,0	631	10159	
TUBO Ø114,3x8,8	50	1115	
TUBO Ø114,3x8,6	37	807	
BARRA RED. Ø1"12"	122	122	
BARRA RED. Ø5/8"	468	738	
BARRA RED. Ø7/8"	27	81	
BARRA RED. Ø1"	130	507	
CHAPA LISA #1/2"	2,7	20	
CHAPA LISA #5/8"	1,0	125	
CHAPA LISA #3/4"	8,1	1215	
CHAPA LISA #7/8"	8,4	1470	
TOTAL (COM MARGEM DE 5%)		43.000 kg	

[illegible]